

- 1 Waterproof earphones with Earbuds**
- 2 Swimming goggles clip with waterproof earphones**
When it is installed on the main unit, the system will be fully waterproof to 3metres
- 3 Waterproof Headphone Speaker with Earbuds**
- 4 Waterproof Headphone Speaker**
- 5 Waterproof Neckband Headphone**
When it is installed on the main unit, the system will be fully waterproof to 3metres
- 6 Main Unit**
- 7 Previous Track**
- 8 Operation Status Indicator**
 - a) BLUE light fast blinking:
- busy searching/reading files
 - b) BLUE light slow blinking:
- playing
 - c) RED light constant on:
- memory card missing or
- memory card misplacement or
- no suitable file is found
- 9 Volume Up**
- 10 Power ON / OFF**
 - a) Hold more than 2 sec. for ON
 - b) Hold more than 2 sec. for OFF
- 11 Volume Down**
- 12 Shuffle / Track Repeat**
- 13 Shuffle / Track Repeat Indicator**
 - a) No light:
- Shuffle/Track Repeat is not used
 - b) GREEN light single blinking:
- Shuffle mode is being used
 - c) GREEN light double blinking:
- Track Repeat mode is being used
- 14 Next Track**
- 15 Play / Pause**
- 16 Cradle**
When cradle is in use and installed on main unit, the system will not be waterproof
- 17 USB Port**
Connect the USB cable to Computer USB port for battery charging only. NOT for file transfer. An optional AC/DC USB charger may also be used for battery recharge
- 18 Charging Status Indicator**
 - a) RED light:
- unit charging
 - b) GREEN light:
- unit fully charged
- 19 Headphone Jack**
Audio Output when cradle is attached to the main unit
- 20 Reset Switch**
Use a pointed object to press switch and reboot system
- 21 Memory Card Holder**
Install your own Micro SD card with music files in MP3 / WMA formats

Specifications

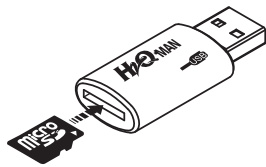
Waterproof	Up to 3m
System supporting file formats	MP3 / WMA
Micro SD card	Size supports up to 8 GB
Output	20mW per each channel
Play time	10 hours (play with MP3 format files)
Power	Built-in 3.7V Li-Polymer Rechargeable Battery
Input	5V, ≥ 500mA through the USB cable
Charging time	Approx. 2Hrs

Notes:

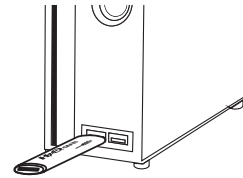
- 1) The waterproof MP3 and earphones are not for scuba diving!
- 2) AC-DC Power Transformer is an optional accessory and it is not included in the product.

A Music File Transfer

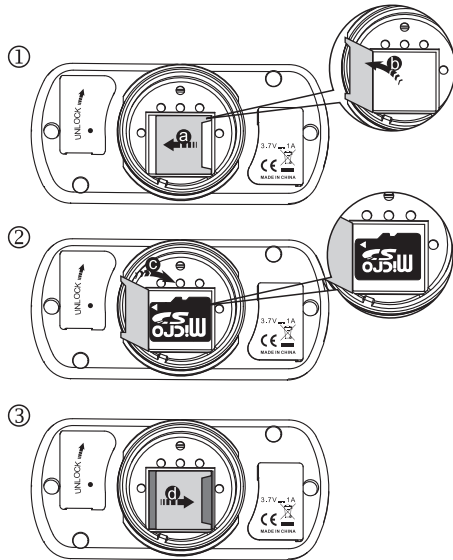
Install Micro SD card in supplied card reader/USB adapter.



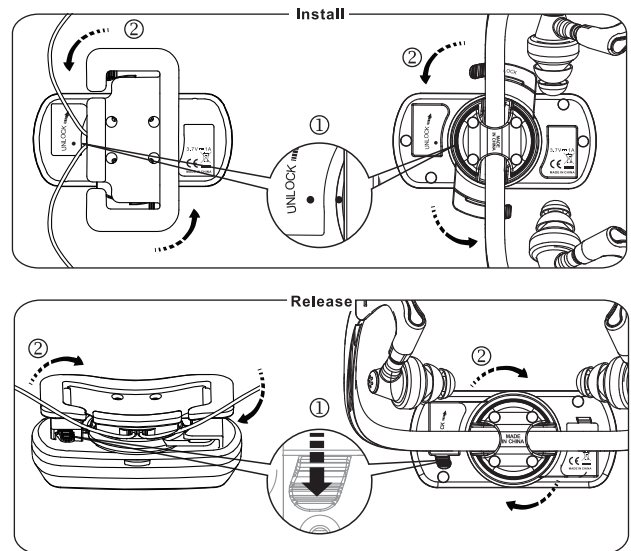
Install adapter into computer USB port. Transfer files from computer directly to card.



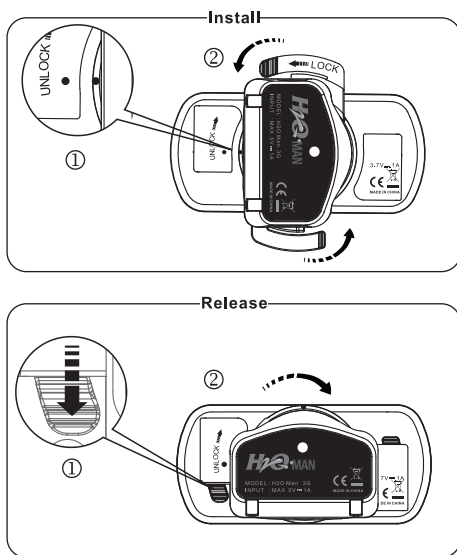
B Install Memory Card



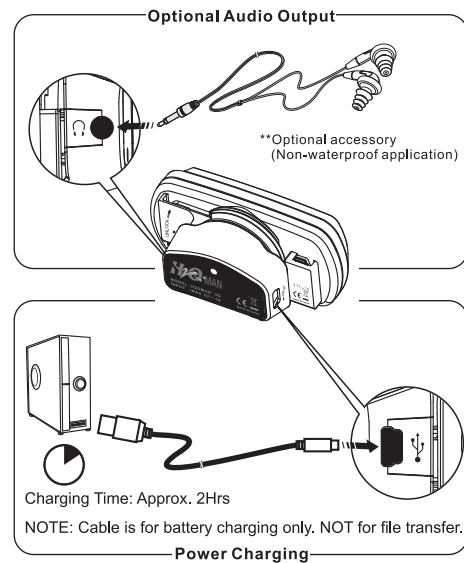
C Install / Release Swimming goggles clip with waterproof earphones



D Install / Release Cradle



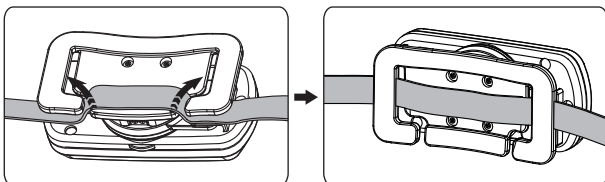
E Power Charging / Option Audio Output



F Wearing the headphone MP3 system

The waterproof headphone MP3 system is designed to be worn on the back of the head, attached to a swim goggle.

Headphone cord can hang below or over the ear.



Swim goggle strap should be attached to the system as shown.

